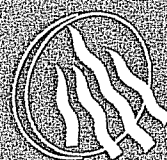


# **Health Determinants**

Queensland 2004

## **Logan-Beaudesert Health Service District**



**Queensland  
Government**  
Queensland Health





**Queensland Government**  
Queensland Health

## **HEALTH DETERMINANTS QUEENSLAND 2004**

### **Chapter 6. LOGAN-BEAUDESERT HEALTH SERVICE DISTRICT**

#### **PUBLIC HEALTH SERVICES AND HEALTH INFORMATION CENTRE**

© Queensland Health 2004

ISBN 0 7345 2957 0

Copyright protects this publication. However, Queensland Health has no objection to this material being reproduced with acknowledgment, except for commercial purposes. Permission to reproduce for commercial purposes should be sought from the Policy and Quality Officer, Queensland Health, GPO Box 48, Brisbane Q 4001.

ABS data used with permission from the Australian Bureau of Statistics

This document is also available on:

- Queensland Health internet and intranet site at <http://health.qld.gov.au/phs/documents/phpru/22418dmp.htm>
- CD.

Suggested citation:

Queensland Health: Harper C, Cardona M, Bright M, Neill A, McClintock C, McCulloch B, Hunter I, Bell M. Health Determinants Queensland 2004 Public Health Services, Queensland Health. Brisbane 2004.

### **Health Determinants Queensland 2004**

Chapter 1 Whole of population

Chapter 2 Children

Chapter 3 Young people

Chapter 4 Older people

Chapter 5 Indigenous peoples

Chapter 6 Health service district profiles

### **Companion documents**

*Health Determinants Queensland 2004 at a glance*

*Health Determinants Queensland 2004: Statistical report.*

### **For further information: Southern Public Health Unit Network:**

Brisbane Southside  
Level 1, Queensland Health  
Scientific Services Building  
39 Kessels Road  
Coopers Plains Qld 4108  
Ph. 07 3000 9148  
PO Box 333, Archerfield

Darling Downs  
3 Bell Street  
Toowoomba Qld 4350  
Ph: 07 4631 9888  
PO Box 1775  
Toowoomba Qld 4350

Gold Coast  
10-12 Young Street  
Southport Qld 4215  
Ph: 07 5509 7222  
PO Box 267  
Southport BC 4215

West Moreton  
Level 4, Tower Block  
Ipswich Hospital  
Chelmsford Avenue  
Ipswich Qld 4305  
Ph: 07 3810 1500  
PO Box 73 Ipswich 4305

South West  
18 Wills Street  
Charleville Qld 4470  
Ph: 07 4656 8100

## Foreword

The health of the people of Queensland is very good overall and continues to improve. However, recent declines in the amount of physical activity undertaken, poor nutrition, an increase in overweight and obesity, as well as high levels of smoking and alcohol misuse, tell us that this is not a time for complacency. In addition, the increasing inequalities in health and the poor health of Indigenous peoples require specific attention.

In order for us to address these issues, Queensland Health and others whose work impacts on health and wellbeing, need to focus on the areas that will have the greatest gains for all Queenslanders. Information is critical to enable us to make decisions about where to focus and invest.

*Health Determinants Queensland 2004* is a key resource in this regard. It provides a summary of the most important factors influencing the health status of Queenslanders today and the areas of potential gain, and highlights the key responses needed to address them. This report brings together indicators of the major behavioural, social, economic and environmental determinants of health and their recent trends in Queensland. In doing so, it provides valuable guidance to government, non-government agencies and the community for improving health and reducing the burden of disease tomorrow and into the future.

It is absolutely clear that the influences on the health of Queenslanders go well beyond the scope of health agencies. All parts of society are and need to be engaged in the effort. Promoting and sustaining the health of the public is one of the most important functions of government and Queensland Health's new strategic intention highlights this.

Our mission is to promote a healthier Queensland. Our vision is to be leaders in health and partners for life. We will be successful in promoting a healthier Queensland through acting on following five strategic intents:

- Healthier staff – optimise staffing levels, provide staff with the right knowledge and skills, and provide an environment that values their experience and which supports positive ideas to drive innovation, creativity and health enhancements
- Healthier partnerships – work with others to harmonise programs and activities that impact on health
- Healthier people and communities – promote healthier lifestyles and environments for individuals, families and communities and improve community-based chronic disease management
- Healthier hospitals – provide high quality and equitable acute emergency care, integrated with enhanced community-based services
- Healthier resources – use finite resources to maximum advantage.

Health Determinants Queensland provides an information basis from which we can make informed decisions about how to best action each of these intents – what initiatives need to be implemented in which areas to achieve the greatest possible gains in health.

I encourage everyone with an interest in health – which is all of us – to familiarise yourself with the information in this report and to use this information in planning priority setting, and decisions about resource allocation.

Dr Steve Buckland  
Director-General  
Queensland Health

## Acknowledgments

Health Determinants Queensland 2004 was undertaken by Public Health Services in collaboration with Health Information Centre, Queensland Health.

Specialist advice and assistance relevant to all chapters was received from William Fox (alcohol, tobacco and illicit drugs), Fran McFadzen and Di James (graphics), Danny Youlden (ICD coding), Liz Davis and Trisha Johnson (mental health), Amanda Lee, Terry Coyne, Torukiri Ibiebele, Simone Lowson and Christina Stubbs (nutrition), Paul Wood and Penny Slater (oral health), Ruth Miller, Brigid Walsh, Kate Swanton and Paula Nihot (physical activity), Natalie Baig, Paul Harris and Garth Henniker (social determinants and community capacity) and Jennifer Muller (women's cancer screening). In addition, Angela Taft, Kelsey Hegarty, Emad Nimri, Ross Thompson, Vicki Poxon, Annette Dobson, Elvia Ramirez and Jennifer Muller contributed during the consultation on selection of indicators and literature review.

Specialist assistance relevant to this chapter was received from Brett Eichmann (mapping) and Stephen Begg, University of Queensland (synthetic estimation).

The intervention sections in this report were managed by Helen Clifford and provided by Steve Anstis (alcohol), Margaret Young (communicable disease), Kerry Bell (food safety), Paul Vardon and Phil Carswell (injury), Liz Davis (mental health), Amanda Lee and Christina Stubbs (nutrition), Paul Wood and Linda Bertram (oral health), Mark Counter (sexual health), Paul Harris and Natalie Baig (social determinants), Mark West (smoking), Cameron Earl (sun protection), Brigid Walsh (physical activity), Jennifer Muller and Angela Beitz (women's cancer screening).

## Table of contents

6.1	Health Determinants Queensland 2004 .....	6-1
6.2	What is the aim of this profile?.....	6-1
6.3	An introduction to small area analysis .....	6-1
6.4	Who lives in Logan-Beaudesert HSD and how will that change?.....	6-2
6.5	What are the key health issues and their causes? .....	6-3
6.6	How many people are at risk? .....	6-5
6.7	How can the burden of disease be addressed? .....	6-5
6.8	Priorities for prevention in Logan-Beaudesert HSD.....	6-6
6.9	Appendix: Tables and figures.....	6-7
6.10	References .....	6-12

## 6.1 Health Determinants Queensland 2004

*Health Determinants Queensland 2004* (HDQ) reports indicators of the major behavioural, social, economic and environmental determinants of health in the state. Where possible, it reports key trends in these indicators. Outcome indicators of preventable health issues are also reported. The report describes the relationship between the determinants of health and their outcomes. Queensland population groups with excess mortality and morbidity associated with conditions and determinants are also identified.

A determinant of health is a factor or characteristic that brings about a change in health, either for the better or for the worse. Health determinants can be broadly divided into 'upstream' determinants (education, employment, income, living and working conditions), 'midstream' (community capacity, health behaviours and psychosocial factors) and 'downstream' (physiological and biological factors).<sup>1</sup> The social, cultural, economic and environmental factors are collectively called 'social determinants of health and wellbeing'.

The five population based chapters of HDQ reflect the life course approach and the age specific nature of many health determinants and outcomes. The *Whole of population* chapter reports the determinants of health which affect the entire population, key health outcomes and interventions to address these determinants. The *Children, Young people, Older people* and *Indigenous peoples* chapters reflect the health determinants of specific relevance to those populations. Population-specific interventions to address these determinants are described.

The *Health service district profiles* chapter comprises a suite of 34 profiles, one for each of the population based Health Service Districts (HSDs) in Queensland. The Logan-Beaudesert HSD profile is one of that suite.

## 6.2 What is the aim of this profile?

This profile provides Logan-Beaudesert HSD with a summary of the key health issues and their causes, in the total population and in subpopulations within the district.

Information on the prevalence of risk and protective factors for health is required to determine the level of need in the population, and to measure the effectiveness of services. With rapidly changing populations in many parts of Queensland, and specifically an ageing population, strategic prevention initiatives are critically needed.

*Health Determinants Queensland 2004* supports decision makers at the local level in identifying priority areas for prevention and evidence based interventions for investment. It provides information for planning to strategically address the current, and short and long term future burden of disease in the Logan-Beaudesert HSD.

## 6.3 An introduction to small area analysis

The health status of the people of Logan-Beaudesert HSD can be considered in two ways.

- What are the major determinants of health, death and disease?
- Are the health issues of the people of this district different to other populations in Queensland?  
That is, what is the relative health status of this population?

The major determinants of health, death and disease, and the health status of the total Queensland population are reported in other chapters of *Health Determinants Queensland 2004* and in earlier publications.<sup>2,3,4,5,6</sup> This information provides a good base for understanding the general health issues affecting this district's population.

Regarding the relative health status of this population, this is of critical concern, as the impact of changing sociodemographic patterns and the effect of lifestyle behaviours on demand for health services is experienced in the district currently and in the future.

In order to determine the relative health status of the district population, knowledge of the health status of this and other districts in Queensland is required. However, at HSD level and smaller, mortality and morbidity information is not always available. In addition, where this information is available, it has some inherent problems which can lead to difficulties with interpretation and possibly the development of misinformation.<sup>7</sup> These difficulties with small area analysis mostly stem from the relatively small number of cases reported for many conditions in smaller populations, with variation in numbers of cases, deaths or behaviours due to unexpected or non-representative events.

An estimation method has been adopted to address this problem and is used in this profile. This method relies on the fact that the health status of a population is largely predicted by sociodemographic characteristics of that population.<sup>8,9</sup> The key sociodemographic predictors of health status of a population are the age structure, sex distribution, proportion of Indigenous people and socioeconomic profile, and to a lesser extent urban, rural or remote location. Cultural diversity also needs to be considered.

The relative health status of people living in the Logan-Beaudesert HSD can be estimated from knowledge of:

- key sociodemographic characteristics of the population in the district and Queensland
- the distribution of health outcomes and determinants in these sociodemographic groups in Queensland, as described in *Health Determinants Queensland 2004*.

This methodology is detailed in section 1.6 of *Whole of population* chapter and in other Queensland Health documents.<sup>7</sup> While this estimation method provides broad indications of health status in the population, complementary local knowledge will enhance the interpretation of this information and the understanding of its significance to the local population.

Population groups are not homogenous in regards to health issues. Thus, the key issues for population groups are interdependent. Prevalence of health outcomes and determinants are the result of complex interactions between the sociodemographic variables of the population. Key interactions are between: Indigenous status, socioeconomic disadvantage, and to a lesser extent rural or remote location; and between all populations and socioeconomic disadvantage. That is, older people who live in socioeconomically disadvantaged areas have greater health needs than those living in socioeconomically advantaged areas. A similar observation holds for Indigenous people, where the impact of Indigenous status, socioeconomic disadvantage, and rural and remote locations are interwoven. In addition, other interactions occur within district population groups. For example, Indigenous children and children from lower socioeconomic backgrounds are at greater risk of developing untoward health outcomes such as diabetes, than other children.

## 6.4 Who lives in Logan-Beaudesert HSD and how will that change?

The key sociodemographic predictors of health are described for Logan-Beaudesert HSD, using data from the 2001 census of population and housing, and population projections where available (Table LB 6.2).

In summary, compared to Queensland, Logan-Beaudesert HSD has:

- a higher proportion of children
- moderately growing population
- projected increase in proportion of older people
- a higher proportion of people living in areas of greater socioeconomic disadvantage
- a culturally diverse population.

Within the boundaries of the district, the sociodemographic distribution of the population varies considerably. Specifically, some areas of the HSD have a higher proportion of young children aged 0-4 years (Figure LB 6.3), children aged 5-14 years (Figure LB 6.4), young people aged 15-24 years (Figure LB 6.5), older people aged 65 years and older (Figure LB 6.6). The location of Indigenous people (Figure LB 6.7) and areas of greater socioeconomic disadvantage (Figure LB 6.8) also varies across the district. Many areas have greater proportions of a number of these population groups, including older people and Indigenous peoples living in areas of socioeconomic disadvantage.

Depending upon the sociodemographic mix of the local population as shown in these figures, the health status and specifically the likely prevalence of determinants of health, will vary within the district. This same estimation model can be applied to identify areas within the district at greater health risk.

In this profile, unless otherwise noted, the following age range definitions apply; children are 0-14 years, young people aged 15-24 years, adults are 25-64 years and older people are 65 years and older.

### Age and sex distribution

In 2002, the population of Logan-Beaudesert HSD was 284,467, which represented 7.7% of the Queensland population (Table LB 6.2). This district had the fourth largest population in Queensland.

In 2002, compared to the Queensland population there were proportionally more children than the Queensland population (Figure LB 6.1).

### Population growth

Logan-Beaudesert HSD is an area with a recent history of population growth. Moderate population growth, at a rate greater than the Queensland rate is projected for the period 1996 to 2016. Projected population growth will however result in the fourth largest increase in absolute numbers of people compared to other districts; an increase of 85,983 persons in the 20-year period. Consistent with an ageing population in many areas in Queensland, greatest increases will occur in older age groups (Table LB 6.2).

These projections are based on data derived from the 1996 census.<sup>10</sup> Projected population growth using the 2001 census, for Queensland and at Local Government Area level have been reported,<sup>11</sup> but are currently not available for health service districts.

### Indigenous population

In 2001, there were 6,086 Indigenous people in the district, representing 2.2% of the total district population and 5.4% of Queensland's Indigenous population. In Queensland, 3.1% of the population identified as Indigenous in 2001.<sup>12</sup>

### Socioeconomic disadvantage

Logan-Beaudesert HSD had a greater proportion of people living in areas of relative socioeconomic disadvantage (29.3% of the population or about 80,000 people) in 2001, compared to Queensland as a whole (20%). Compared to Queensland, in this district there were relatively fewer people living in areas of relative advantage; 7.7% compared to 20% for the state. Using the 2001 Index of Relative Socioeconomic Advantage/Disadvantage,<sup>13</sup> a profile of socioeconomic disadvantage includes variables for unemployment, lower income and level of skilled occupations, and a profile of advantage includes variables for household and individual income, employment and occupation.

In 1996, following the pattern in all HSDs in Queensland, the Indigenous population in this HSD were more likely to live in areas of greater socioeconomic disadvantage than the non-Indigenous population.<sup>3</sup>

### Cultural diversity

There were relatively more people who spoke a language other than English at home in Logan-Beaudesert HSD; 8.1% compared with 7.1% for the state.<sup>14</sup>

Of those people who spoke a language other than English at home, Samoan was the most common language, followed by German, Spanish and Cantonese. Samoan speakers are generally younger (median age 20-24 years) while German speakers are generally older (median age 50-54 years), and Spanish and Cantonese (median age 35-39 years) similar to the English speaking population (median age 30-34 years).

## 6.5 What are the key health issues and their causes?

Considering the whole population in the Logan-Beaudesert HSD, the major causes of death and illness include: Coronary heart disease (CHD), stroke, chronic obstructive pulmonary disease (COPD), depression and lung cancer (Table LB 6.4).

Health determinants of significant impact in this population include: harmful alcohol consumption, smoking, overweight and obesity, poor nutrition, physical inactivity, and risk and protective factors for mental health.

Due to the effect of socioeconomic disadvantage in this district, the health issues and their determinants listed above are likely to be exacerbated.

A complete list of health outcomes and determinants of particular importance in each population group in Logan-Beaudesert HSD are in Table LB 6.4.

The social determinants of health vary for each population group, and are not detailed in this profile. These determinants are described in each population-based chapter of *Health Determinants Queensland 2004*. The social determinants of health will vary between areas of the district. For example, socioeconomic disadvantage in one area may be reflected in poor employment options while in other areas it may be reflected in low disposable incomes, or lack of health awareness and general education.

### **Higher proportion of children in the population**

The major causes of death and illness for very young children aged 0-4 years include: low birth weight, birth trauma and asphyxia, congenital heart disease and sudden infant death syndrome (SIDS).

The major cause of death and illness for children aged 5-14 years is asthma, with additional key conditions of: attention-deficit hyperactivity disorder, depression and road traffic injury.

Health determinants of significant impact in this population include: poor nutrition (both maternal and childhood), overweight and obesity, physical inactivity, sun protection, vaccination and oral health. The social determinants of health of specific importance to children include family supports, housing, family income and employment, and quality education for children.

While the health of children is affected by current lifestyle behaviours, such behaviours will also have considerable impact later in life. There will be substantial long-term gains in health and wellbeing gains by addressing the social and economic environments of children and their families. This will involve consideration of a broad range of environmental, socioeconomic and community capacity factors.

### **Projected increase in proportion of older people**

The major causes of death and illness for older people will include: CHD, stroke, Alzheimer and other dementias, COPD, diabetes, and lung and colorectal cancer.

Health determinants of significant impact in this population will include: poor diabetes management, overweight and obesity, poor nutrition, physical inactivity, high blood pressure, poor blood cholesterol management, and smoking. In addition, falls are of particular concern in this population. Risk and protective factors for mental health are likely to have widespread effects on physical and mental health. Social determinants of health are of specific importance in this population, particularly housing, transport and social isolation.

These health issues will be exacerbated where older people are socioeconomically disadvantaged.

### **Higher level of socioeconomic disadvantage in the district**

In general, socioeconomically disadvantaged people experience poorer health and shorter life expectancy than more socioeconomically advantaged people, for nearly all disease causes and populations studied.

The major causes of death and illness for populations of high socioeconomic disadvantage compared to those of low socioeconomic disadvantage include higher rates of: diabetes, intentional and unintentional injuries and mental disorders.

Health determinants of significant impact in this population include: diabetes management, harmful alcohol consumption, overweight and obesity, poor nutrition, physical inactivity, and risk and protective factors for mental health.

Socioeconomic disadvantage is evident in this district, and while the instrument for measuring disadvantage lacks sensitivity in terms of pinpointing individual age groups, it would be expected that all age groups would be affected. The impact of disadvantage in children may be seen in a growing prevalence of physical inactivity, overweight and obesity, poor nutrition and oral health. This pattern is also likely to be seen in young people with the uptake of smoking and hazardous alcohol consumption setting up patterns for long term health burden. Smoking prevalence plus overweight and obesity, lack of fruit and vegetables in the diet, harmful alcohol consumption and insufficient physical activity during the adult years will combine to produce higher rates of the chronic disease burden of cardiovascular disease, diabetes and cancers. Socioeconomic disadvantage will be reflected in health determinants such as unemployment, transport difficulties, lack of affordable housing and a greater reliance on Queensland Health services.

### **Indigenous population**

Due to the excess burden of disease in Indigenous peoples in Queensland in urban, rural and remote parts of the state, specific health gains can be made through targeted interventions in this district. Indigenous peoples in this HSD were more likely to live in areas of greater socioeconomic disadvantage than the non-Indigenous population.

The major causes of death and illness for Indigenous peoples include: stroke, CHD, diabetes, suicide, unintentional injury and mental health.

Health determinants of significant impact in this population include: poor diabetes management, overweight and obesity, poor nutrition, physical inactivity, harmful alcohol consumption, high blood pressure, poor blood cholesterol management, and risk and protective factors for mental health. In addition, rates of cervical cancer screening and asthma management are projected to be low in this population. Social determinants of health are of specific importance in this population, particularly sense of control, housing, employment and transport.

### Culturally and linguistically diverse populations

The health status of the Samoan, German, Spanish and Cantonese speaking people, and other culturally and linguistically diverse populations within Queensland or this district is largely unknown, although it is known that the Samoan population have a high susceptibility to type 2 diabetes. The age profile of the population will however provide some broad guidelines to the health issues of concern. In addition, the social needs of these populations will need to be considered and will rely on more detailed local knowledge.

## 6.6 How many people are at risk?

An extension of estimating prevalence of health determinants of Logan-Beaudesert HSD is the estimation of the number of residents with specific key conditions (Table LB 6.1). The attributable burden of disease, the preventability of the conditions and the availability of data, were the basis for selecting the conditions to estimate case numbers.

Table LB 6.1: Estimated number of residents with specific key conditions in Logan Beaudesert HSD, by sex, 2001

Condition and age group	Estimated case number	
	males	females
Diabetic adults, aged 25 years and older	6,000	5,000
Overweight adults, aged 20 years and older	40,000	25,000
Obese adults, aged 20 years and older	19,000	17,000
Overweight children, aged 5-14 years	3,500	2,000
Obese children, aged 5-14 years	1,400	2,000
Asthmatic children, aged 0-9 years	4,000	2,500

## 6.7 How can the burden of disease be addressed?

Specific interventions to address the burden of disease in a population should target diseases, conditions and determinants of health which pose significant threat and are potentially preventable. There is now good evidence that a range of interventions are effective in preventing disease, illness and injury, and in promoting health and wellbeing through action on the determinants of health and ill health.

The key challenge is to ensure these initiatives are ongoing and widespread, and, are at a level sufficient to achieve broad based population-wide outcomes, as well as reduce health inequalities across population subgroups. Evidence based interventions to address these issues in each population are detailed in section 1.5 of the *Whole of population* chapter and in equivalent sections in other chapters of *Health Determinants Queensland 2004*.

Since population health issues are being addressed by multiple organisations and communities, the aim of these intervention sections is to identify key evidence based strategies that are currently being undertaken, are planned or are required. These strategies are based upon best practice. The interventions will be led by a variety of organisations in partnership with other sectors.

It is clear there are no simple, quick fixes to these complex issues. Action on all determinants requires multi-strategy approaches which:

- include both population-wide and at-risk group approaches
- involve sectors working together
- focus on both risk and protective factors
- address social, behavioural, economic and environmental factors
- specifically address equity and reduce disparities by focusing on the needs of the most disadvantaged communities and population groups
- take a lifecourse perspective.

The risk of disease is not confined to a particular group of the population with particularly high levels of risk factors. Rather, the risk of many diseases increases with increasing levels of risk factors, from levels within the normal range to very high levels of risk factors.<sup>15</sup> In particular, there is a continuous association between:

- risk of coronary heart disease and healthy and excess weight (as assessed by body mass index),<sup>16</sup> serum cholesterol,<sup>16</sup> fruit and vegetable intake<sup>17</sup> and diastolic blood pressure<sup>16</sup>
- risk of diabetes and healthy and excess weight<sup>16</sup>
- risk of haemorrhagic and ischaemic stroke and healthy and excess levels of diastolic blood pressure<sup>18</sup>
- risk of hip fracture and bone mineral density<sup>16</sup>
- risk of neural tube defects and maternal plasma folate.<sup>16</sup>

Thus incremental change in the population prevalence of these health determinants will affect the health status of the population in Logan-Beaudesert HSD.

Considerable evidence indicates that current greater prevalence of determinants of ill-health will result in higher hospital separations and mortality in the population in the short and long term. There is a variable and often long lag time between the incidence of health determinants and hospital separation or deaths from associated diseases or conditions. As a result, the excess prevalence of some health determinants in Logan-Beaudesert HSD will be partially reflected in current mortality and morbidity statistics, and partially reflected in future statistics.

## 6.8 Priorities for prevention in Logan-Beaudesert HSD

Addressing the burden of disease in Logan-Beaudesert HSD requires interventions that positively modify the diseases, conditions and health determinants that pose significant preventable burden for the population. Priority health determinants may include those for which prevalence is higher in the HSD than that of Queensland. However, interventions should also be implemented at the small area level if those conditions or risk factors have similar or lower prevalence than that of Queensland, but have a large impact within the small area.

Social determinants of health, particularly sense of control, employment and housing must be addressed to achieve sustained health improvement in this HSD. In addition, environments that support healthy lifestyles must be developed and maintained. Intersectoral partnerships are needed to affect these upstream determinants of health.

It is estimated that currently population groups within this HSD have a higher prevalence of some health behaviours than Queensland as a whole (Table LB 6.4). These key health determinants or preventable morbidity factors are:

- overweight and obesity
- physical inactivity
- poor asthma management
- poor diabetes management
- risk and protective factors for mental health
- hazardous and harmful alcohol consumption
- tobacco smoking.

In addition, specific interventions to address those determinants of health in this population which pose significant preventable burden for the population, but whose prevalence is similar or lower than that of Queensland must be addressed. There is one such health determinant in this district:

- falls in older people.

The relative priority of key health determinants and preventable morbidity factors may change in the future as the population changes.

Population health interventions to address the burden of disease attributable to these health determinants are identified for the whole of the population and for sociodemographic groups, within the relevant chapters of the *Health Determinants Queensland 2004*.

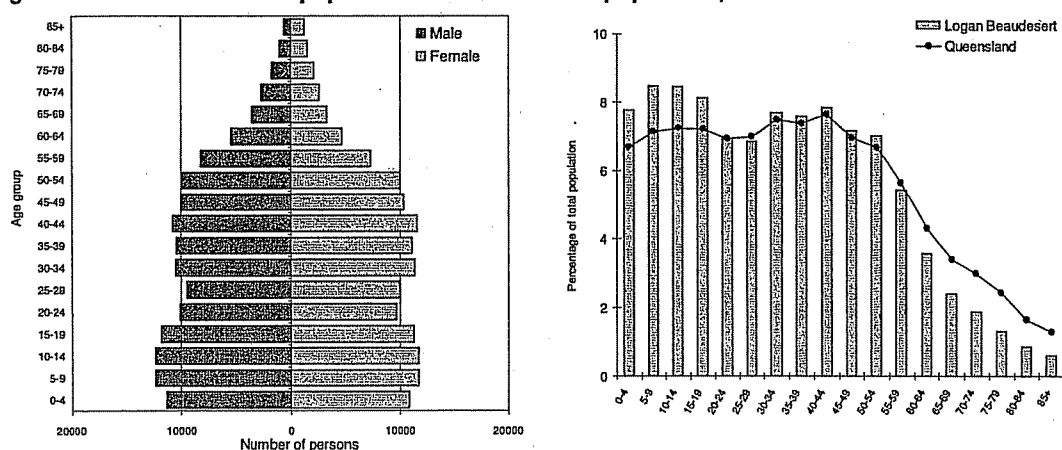
## 6.9 Appendix: Tables and figures

Table LB 6.2: Key summary demographic variables, Logan-Beaudesert HSD and Queensland, 2001

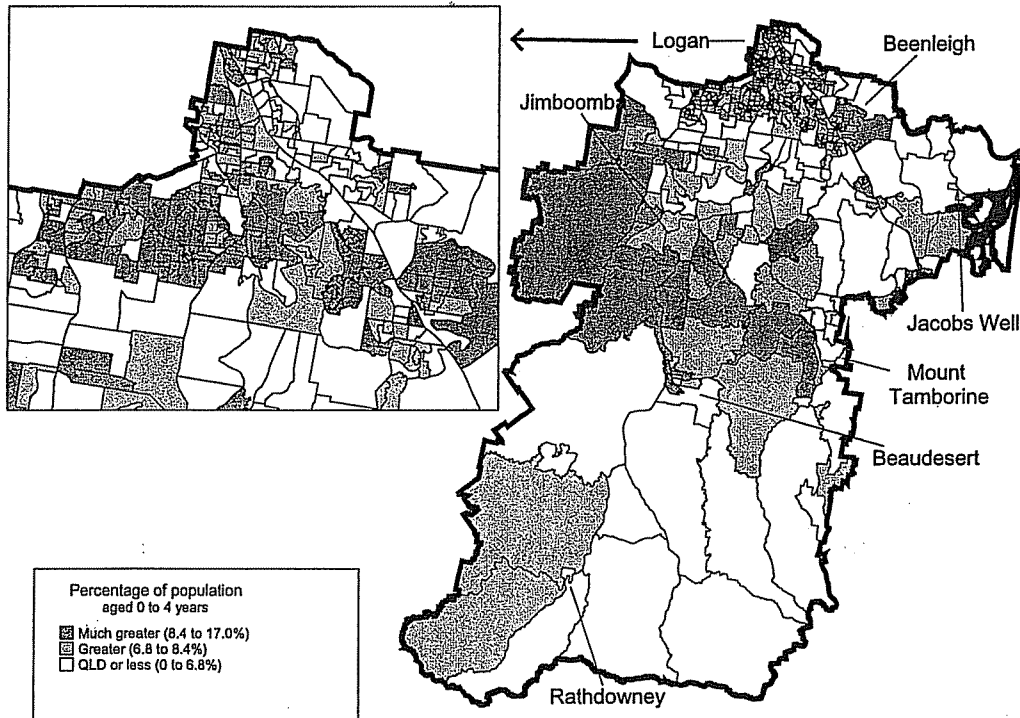
	Logan-Beaudesert	Queensland
Total population 2002	284,467	3,707,175
Percentage of Qld population	7.7	
% males	49.9	49.7
Age distribution 2002		
% aged 0-14 years	24.7	21.0
% aged 15-24 years	15.1	14.1
% aged 25-64 years	53.2	53.1
% aged 65+ years	7.1	11.8
Past growth (av annual change 1991-2001)	2.3	2.5
Projected growth 1996 to 2016		
Population aged 0-14 years	13.1	13.4
Population aged 15-24 years	20.5	23.9
Population aged 25-64 years	45.5	43.4
Population aged 65+ years	171.0	87.4
Total population	42.7	38.7
Index of Socioeconomic Advantage/Disadvantage 2001		
% population in disadvantaged quintile	29.3	20
% population in advantaged quintile	7.7	20
% Aboriginal and Torres Strait Islander	2.2	3.1
% Australian born	72.6	77.7
% speaks a main language other than English at home (MLOTESH)	8.1	7.1
% MLOTESH and speaks English not well or not at all	4.4	4.9
Accessibility	Highly accessible	

Source: ABS Census 2001. Base data for projections - Department of Local Government and Planning (District groupings added by Health Information Centre)

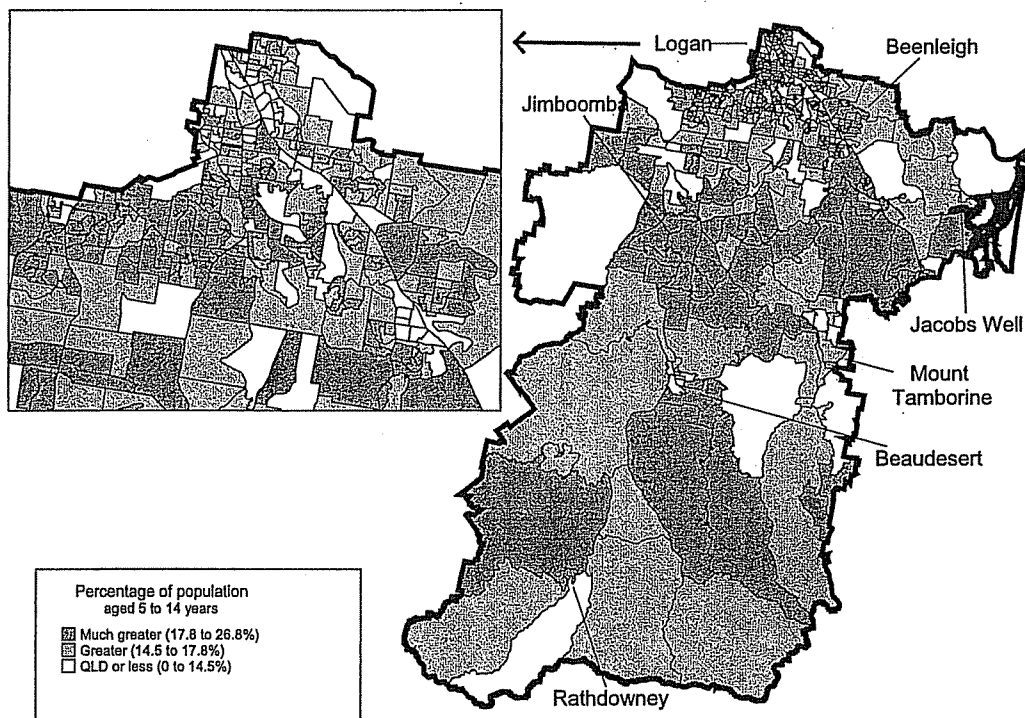
Figure LB 6.1: Estimated resident population for Logan-Beaudesert HSD by age and sex, and difference in age structure between HSD population and Queensland population, 2002



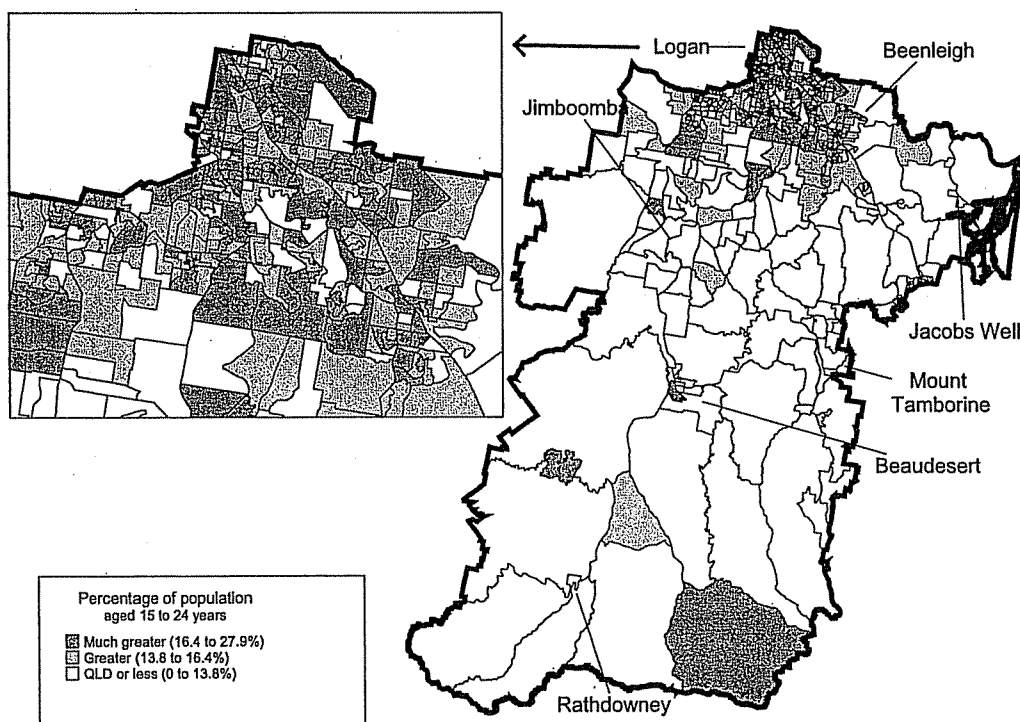
**Figure LB 6.2: Proportion of young children (0-4 years) in Logan-Beaudesert HSD, compared to Queensland, by collection district, 2001**



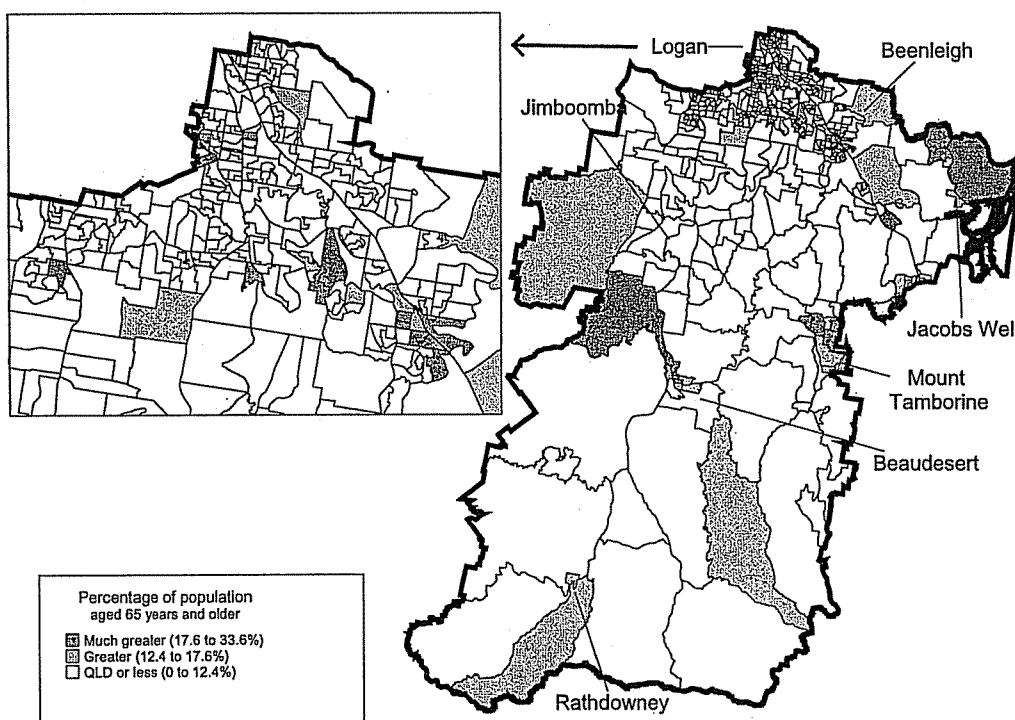
**Figure LB 6.3: Proportion of children (5-14 years) in Logan-Beaudesert HSD, compared to Queensland, by collection district, 2001**



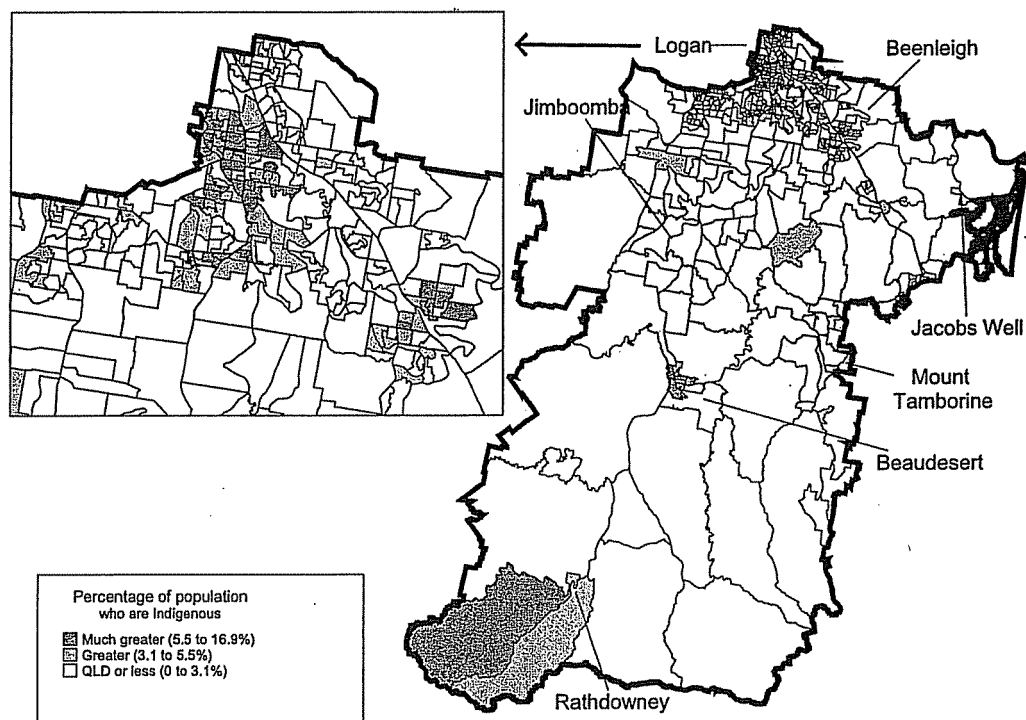
**Figure LB 6.4: Proportion of young people (15-24 years) in Logan-Beaudesert HSD, compared to Queensland, by collection district, 2001**



**Figure LB 6.5: Proportion of older people (65 years and older) in Logan-Beaudesert HSD, compared to Queensland, by collection district, 2001**



**Figure LB 6.6: Proportion of Indigenous people in Logan-Beautesert HSD, compared to Queensland by collection district, 2001**



**Figure LB 6.7: Proportion of population in quintile of highest socioeconomic disadvantage in Logan-Beautesert, by collection district, 2001**

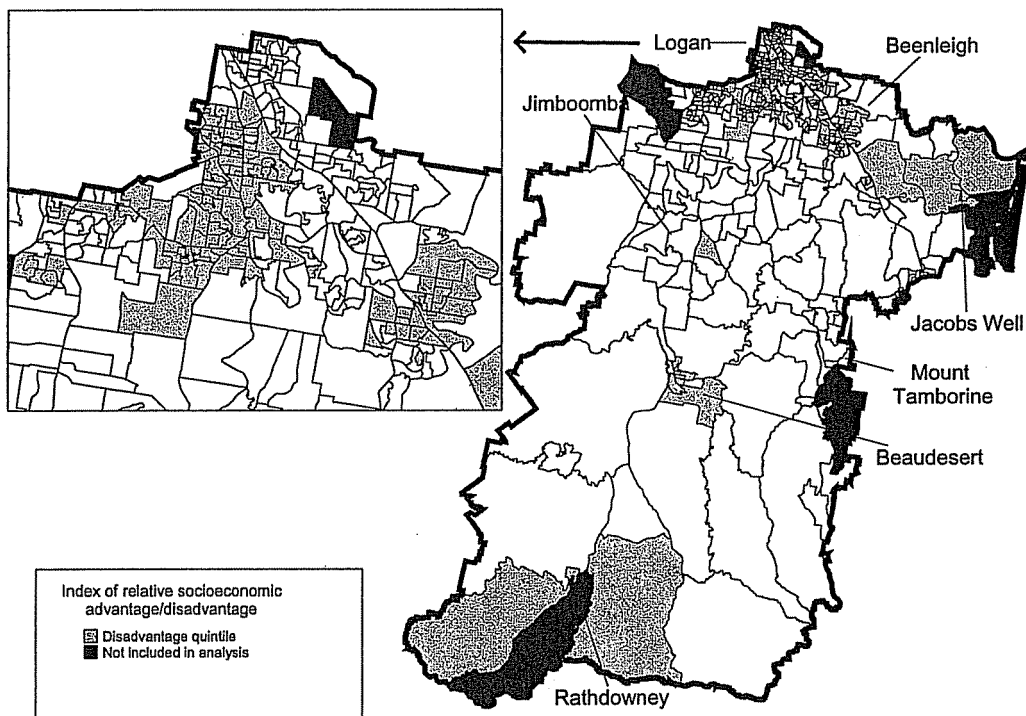


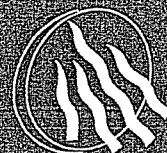
Table LB 6.4 Burden of disease and injury, and determinants of health in populations within Logan-Beautesert HSD

Sociodemographic groups in Logan-Beautesert HSD									
	Logan-Beautesert HSD total population	Currently in greater proportion		Projected to increase	Other population groups				
		Young children (0-14 years)	Socioeconomic disadvantaged <sup>1,2</sup>	Older people (65 years & older)	Males	Females	Young people (15-24 years)	Adults (25-59 years)	Indigenous peoples <sup>1,3</sup>
Burden of disease and injury	CHD Stroke COPD Depression Lung cancer Dementia Diabetes Colorectal cancer Asthma Osteoarthritis	Asthma Low birth weight Attention-deficit hyperactivity disorder Birth trauma & asphyxia Other chromosomal anomalies Congenital heart disease SIDS Depression Road traffic injury Autism & Asperger's syndrome	All causes Diabetes Diseases of the digestive system Intentional injury Unintentional injury Mental disorders Musculoskeletal diseases Chronic respiratory disease Infectious & parasitic diseases & acute respiratory infections Neonatal causes Endocrine & metabolic disorders	CHD Stroke Alzheimer & other dementias COPD Lung cancer Colorectal cancer Diabetes Vision disorders Prostate cancer Hearing loss	CHD Stroke Lung cancer Suicide & self-inflicted injury COPD Road traffic injury Diabetes Substance use disorders Depression Colorectal cancer	Stroke CHD Depression Breast cancer Anxiety disorders Dementias Asthma Diabetes Osteoarthritis COPD	Road traffic injury Depression Bipolar affective disorder Heroin dependence & harmful use Suicide & self-inflicted injury Social phobia Schizophrenia Borderline personality disorder Alcohol dependence & harmful use Eating disorders	CHD COPD Suicide & self-inflicted injuries Diabetes Lung cancer Depression Breast cancer Stroke Colorectal cancer Road traffic injury	All causes CHD Diabetes & complications including renal failure Unintentional injury Suicide & self-inflicted injury Mental health
Health determinants <sup>4</sup>	Harmful alcohol consumption Smoking Poor nutrition Overweight & obesity Physical inactivity Breast & cervical cancer screening Vaccination Social determinants	Poor nutrition Overweight & obesity Physical inactivity Sun protection Vaccination Oral health Social determinants	Harmful alcohol consumption Poor nutrition Overweight & obesity Physical inactivity Cervical cancer screening Social determinants Smoking	Poor nutrition Overweight & obesity Physical inactivity Falls Influenza vaccination Social determinants	Harmful alcohol consumption Smoking Illicit drugs Sun protection	Smoking Poor nutrition Overweight & obesity Physical inactivity Breast & cervical cancer screening	Harmful alcohol consumption Illicit drugs Sexual health Social determinants	Harmful alcohol consumption Smoking Overweight & obesity	Physical inactivity Poor nutrition Overweight & obesity Vaccination Breast & cervical cancer screening Harmful alcohol consumption Sexual health Illicit drugs Social determinants

1. Due to the interplay between these factors and current data sources it is impossible to attribute differences to a single sociodemographic factor.
2. Order of burden of disease of conditions based on rank order of excess burden of bottom quintile of SEIFA 1996, compared with top quintile. Order and inclusion of conditions not based on burden of disease in socioeconomically disadvantaged populations.
3. Condition list based on multiple measures, but not burden of disease based on disability adjusted life years. No rank order applies.
4. Health determinants listed are those in excess prevalence in the specific sub-population and are not in rank order of impact on burden of disease.

## 6.10 References

1. Turrell G, Oldenburg B, McGuffog I, Dent R. *Socioeconomic determinants of health: towards a national research program and a policy and intervention agenda*. Canberra: Queensland University of Technology; April 1999.
2. Queensland Health. *Health Indicators for Queensland: Central Zone 2001*. Brisbane: Public Health Services, Queensland Health; 2001.
3. Queensland Health. *Health Indicators for Queensland: Southern Zone 2001*. Brisbane: Public Health Services, Queensland Health; 2001.
4. Queensland Health. *Health Indicators for Queensland: Northern Zone 2001*. Brisbane: Public Health Services, Queensland Health; 2001.
5. Queensland Health. *The State of Health of the Queensland Population*. Brisbane: Queensland Health; 2001.
6. Pike A, Baade P, Harper C, Muller S, Kennedy B. *Quantifying the Burden of Disease and Injury in Queensland 1996 - 1998*. Brisbane: Health Information Centre, Queensland Health; 2002. Information Circular 61.
7. Queensland Health. *The Estimation of Health Status in Small Areas: Central Public Health Unit Network*, Queensland Health; 2003.
8. Queensland Health. *Social Determinants of Health: The Role of Public Health Services*. Brisbane: Public Health Services, Queensland Health; 2001.
9. Harper C, Baade P, Kennedy B. *The socio-demographic determinants of small area population health in Queensland*. Queensland Health; 2002.
10. Queensland Government. *Department of Local Government and Planning*. Available at: <http://www.dlgp.qld.gov.au/Default.aspx?ID=199>
11. Queensland Government. *Queensland Government Population Projections 2003*.
12. Queensland Health. *2001 Census Factsheets for Health Service Districts: Indigenous population profile*. Public Health Services, Queensland Health; 2004.
13. Australian Bureau of Statistics. *Socioeconomic Indexes for Areas. Index of Relative Socioeconomic Advantage/Disadvantage*. Canberra 2001. Cat. No. 2039.0.
14. Queensland Health. *2001 Census Factsheets for Health Service Districts- Culturally and linguistically diverse populations*. Public Health Services, Queensland Health; 2004.
15. World Health Organization. *The World Health Report 2002: Reducing risks, promoting healthy life*. France 2002.
16. Law MR, Wald N J. Risk factor thresholds: their existence under scrutiny. *British Medical Journal*. 2002;324:1570-1576.
17. Joshipura KJ, Hu F B, Manson J E, et al. The effect of fruit and vegetable intake on risk for coronary heart disease. *Annals of Internal Medicine*. 2001;134(12):1106-1114.
18. Eastern Stroke and Coronary Heart Disease Collaborative Group. Blood pressure, cholesterol and stroke in eastern Asia. *Lancet*. 1998;352:1801-1807.



**Queensland  
Government**  
Queensland Health

